



# The Lisa Shepherd Jenkins Memorial Fundraising Initiative



*"The advances that Lisa Shepherd Jenkins made in seed pathology and seed health during her career were her legacy to the next generation of the seed industry. What better way to continue that legacy of giving forward than to do our part to help educate the next generation of seed industry professionals."*

*-Manjit Misra, Iowa State University*

*"Lisa was an incredible individual who was extremely well respected by her peers and clients. She often went well beyond to provide timely and accurate lab results, investigate unusual circumstances, work with entities to help them prepare their accreditation documents, and work tirelessly to facilitate the review and certification of new test methods for seed pathogens. Her contributions to the seed industry have been numerous and impactful."*

*-Richard Dunkle, American Seed Trade Association.*

*"Lisa was an incredibly talented and driven individual who impacted the lives of countless individuals. Not only was she an internationally respected expert in seed pathology, heading the most active phytosanitary seed-testing program in the country, but she was also a strong advocate for the seed industry and ISU."*

*-Ron Walcott, University of Georgia*

*"Because of Lisa's efforts, the U.S. is the only country that freely displays their seed test methods for other countries to review and critique. Lisa never allowed commercial pressure to affect her better judgment and both industry and regulators learned to respect her impartiality."*

*-John Stevens, Pioneer Hi-Bred International*

*"The methods developed and adopted by Iowa State are in use elsewhere in the world because Lisa took time to educate those who asked. She had a global impact. She did not do this because it was her job; she did this because she loved the seed industry and its people."*

*-Samantha Thomas, Global Monsanto Company*

## Yes! I/we would like to support the:

- Lisa Shepherd Jenkins Memorial Scholarship—2704270
- Lisa Shepherd Jenkins Memorial Fund—2704271

## Outright Gift

- Here is my gift of:  \$100  \$250  \$500  Other: \$\_\_\_\_\_ (Please make checks payable to the ISU Foundation)
- Please charge this gift to my/our credit card (authorized signature required at end of this form).
- MasterCard  Visa  Discover Card # \_\_\_\_\_ Exp. Date \_\_\_\_\_
- Pledge** (requires signature at end of form)
  - I/we wish to pledge a total gift of \$\_\_\_\_\_ paid in equal installments of \$\_\_\_\_\_ beginning \_\_\_\_\_
  - I/we intend to make payments  monthly  quarterly  semi-annually  annually for \_\_\_\_\_ years.

(Please specify your pledge for a period of three years or less.)

- This gift should be credited to my spouse/partner and me.

Spouse/partner Name: \_\_\_\_\_ Date \_\_\_\_\_

Donor Signature \_\_\_\_\_

Donor Information \_\_\_\_\_

Name: \_\_\_\_\_ Phone: \_\_\_\_\_

Address: \_\_\_\_\_ e-mail address: \_\_\_\_\_

To ensure that your gift is properly credited, please return this form with your gift or pledge to:  
**Iowa State University Foundation • 2505 University Blvd. PO Box 868 • Ames, IA 50010-0868**  
**You may also make your gift online at [www.foundation.iastate.edu/shepherdjenkins](http://www.foundation.iastate.edu/shepherdjenkins)**

The Iowa State University Foundation respects the privacy of donors' personal and financial information, and will not release information to the public about prospective or actual donors other than donors' names, gift amounts, and gift designations. Requests from donors that their names not be released will be honored. If you have questions, please call 515-294-9332 or e-mail [sbkassen@iastate.edu](mailto:sbkassen@iastate.edu).

**NOTICE:** The Iowa State University Foundation solicits tax deductible private contributions for the benefit of Iowa State University and is registered to solicit charitable contributions in all states requiring registration. For our full disclosure statement, go to: [www.foundation.iastate.edu/disclosure](http://www.foundation.iastate.edu/disclosure).

07 S16 03

# IOWA STATE UNIVERSITY

## HELPING EDUCATE THE NEXT GENERATION OF SEED INDUSTRY PROFESSIONALS





## THE LISA SHEPHERD JENKINS MEMORIAL FUNDRAISING INITIATIVE

The Iowa State University (ISU) Seed Science Center, the American Phytopathological Society (APS), and the American Seed Trade Association (ASTA) have partnered to establish a fundraising initiative to honor the memory of former Iowa State University seed pathologist Lisa Shepherd Jenkins.

The goal of the fundraising initiative has been set at a minimum of \$50,000. It offers contributors two options for giving: the Lisa Shepherd Jenkins Memorial Scholarship, and the Lisa Shepherd Jenkins Memorial Fund.

Individuals wishing to contribute to the Lisa Shepherd Jenkins Memorial Fundraising Initiative can do so by completing the back panel of this brochure and mailing it to the Iowa State University Foundation, or, by visiting the secure online giving link at:

**[www.foundation.iastate.edu/  
shepherdjenkins](http://www.foundation.iastate.edu/shepherdjenkins)**

Iowa State University does not discriminate on the basis of race, color, age, ethnicity, religion, national origin, pregnancy, sexual orientation, gender identity, genetic information, sex, marital status, disability, or status as a U.S. veteran. Inquiries regarding non-discrimination policies may be directed to Robinette Kelley, Director, Office of Equal Opportunity, Title IX/ADA Coordinator, and Affirmative Action Officer, 3350 Beardshear Hall, Ames, Iowa 50011, Tel. 515 294-7612, email [eooffice@iastate.edu](mailto:eooffice@iastate.edu).

# TWO WAYS TO GIVE

## The Lisa Shepherd Jenkins Memorial Scholarship

will provide scholarships to undergraduate students engaged in seed science and technology at Iowa State University.

## The Lisa Shepherd Jenkins Memorial Fund

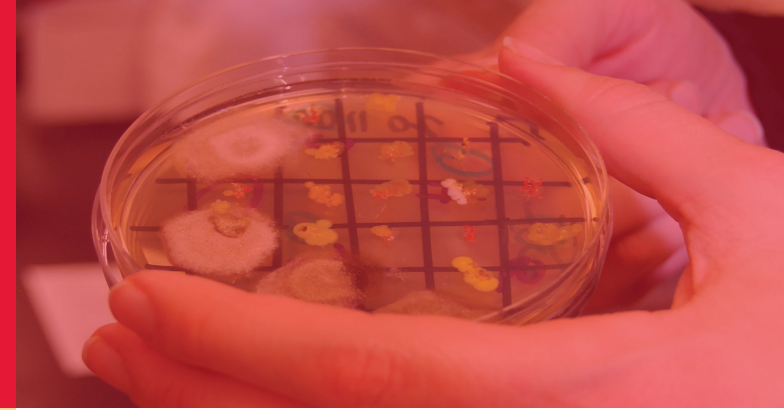
will provide awards to seed professionals who wish to enhance their career by attending an American Phytopathological Society annual meeting.

### For more information, contact:

Dr. Manjit Misra  
102A Seed Science Building  
Iowa State University  
Ames, Iowa 50011-3228  
[mkmisra@iastate.edu](mailto:mkmisra@iastate.edu)  
515-294-6821

**[www.seeds.iastate.edu](http://www.seeds.iastate.edu)**

## IOWA STATE UNIVERSITY



## About Lisa Shepherd Jenkins

Lisa Shepherd Jenkins, director of the administrative unit of the National Seed Health System (NSHS) and seed health testing coordinator for the Iowa State Seed Science Center, had a great love for seed science and the seed industry. Her life was cut tragically short at the age of 43 following a brief battle with a very rare disease—amyloidosis and multiple myeloma.

Shepherd Jenkins possessed a natural leadership ability and an infectious enthusiasm for helping others. She was a tireless champion for phytosanitary issues relating to seed health and was highly regarded by seed industry colleagues from around the world.

As Director of the Administrative Unit of the NSHS, Shepherd Jenkins facilitated the accreditation of private companies to conduct phytosanitary testing and worked to standardize laboratory and field inspection methods across the U.S. She collaborated with the USDA-APHIS and the American Seed Trade Association on international trade issues dealing with seed, and focused her efforts on science-based solutions to remove unnecessary phytosanitary restrictions.

As Seed Health Testing Coordinator for the Seed Science Center at Iowa State, Shepherd Jenkins headed the most active phytosanitary seed-testing program in the country. She conducted tests on more than 350 different host-pathogen combinations. More than 95 percent of all seed samples certified for export in the United States were processed in Shepherd Jenkins' lab.

Shepherd Jenkins served as Chair of the American Seed Trade Association Emerging Diseases Committee; Chair and member of the American Phytopathological Society Seed Pathology Committee; and as a member of the National Seed Health System/Plant Protection and Quarantine/National Plant Advisory Group.